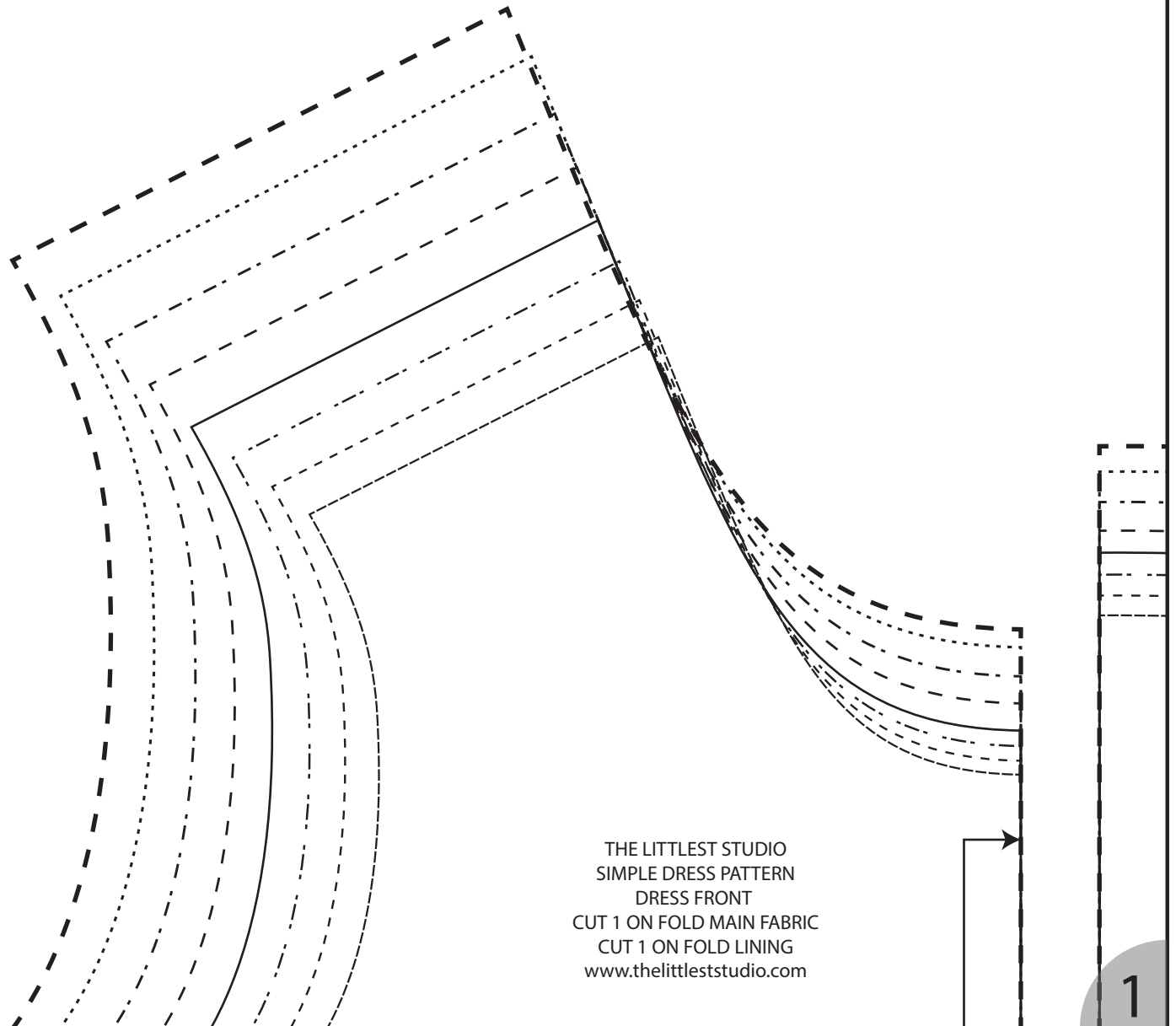
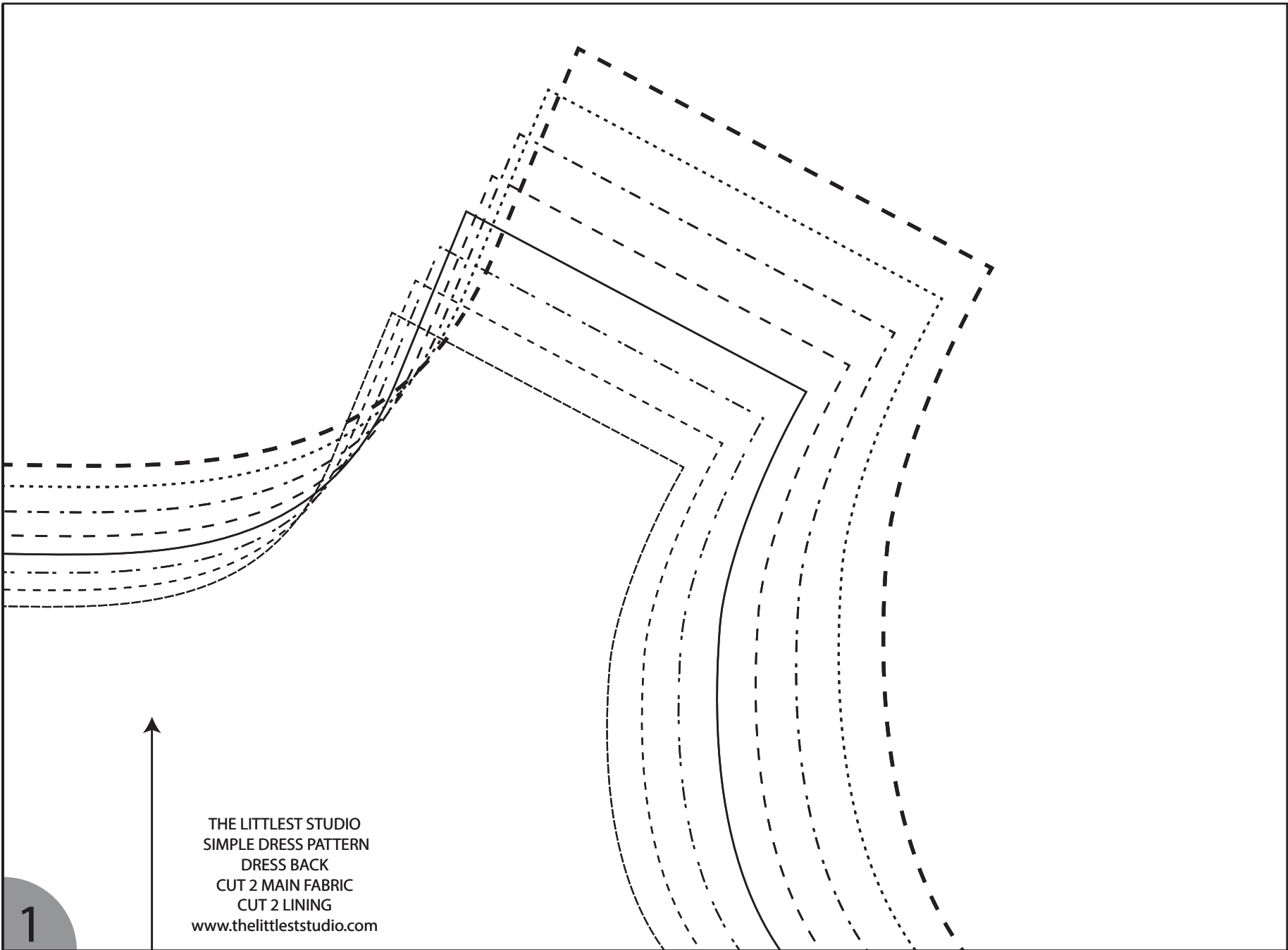


PRINT OFF THIS PAGE
FIRST
AND MEASURE
THIS 2" X 2" SQUARE
TO ENSURE
PROPER SIZING

- Size 1
- Size 2
- Size 3
- Size 4
- Size 5
- Size 6
- Size 7
- Size 8



THE LITTLEST STUDIO
SIMPLE DRESS PATTERN
DRESS FRONT
CUT 1 ON FOLD MAIN FABRIC
CUT 1 ON FOLD LINING
www.thelittleststudio.com

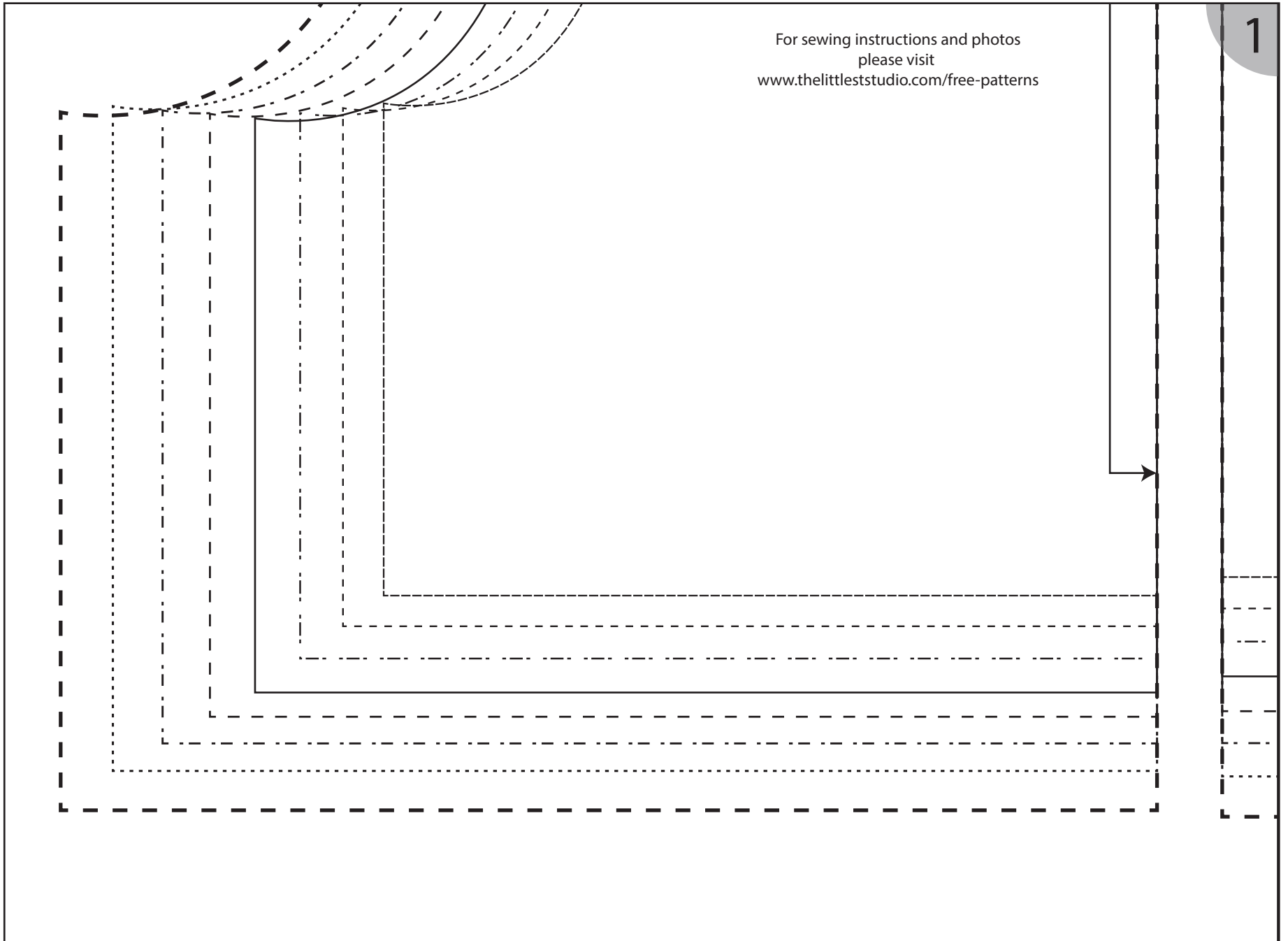


1

THE LITTLEST STUDIO
SIMPLE DRESS PATTERN
DRESS BACK
CUT 2 MAIN FABRIC
CUT 2 LINING
www.thelittleststudio.com

For sewing instructions and photos
please visit
www.thelittleststudio.com/free-patterns

1



1

Skirt Length is Desired Length + 1"

Size	Skirt Rectangle Width
1	50"
2	50"
3	60"
4	60"
5	80"
6	80"
7	90"
8	90"

