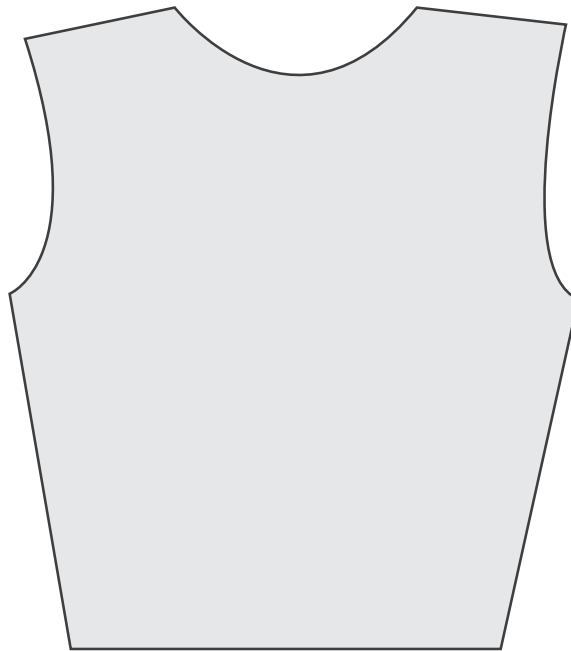


the littlest studio

KNIT BODICE



# the littlest studio

MIX AND MATCH WITH ALL THESE PATTERNS!  
AVAILABLE ON [WWW.THELITTLESTSTUDIO.COM](http://WWW.THELITTLESTSTUDIO.COM)

## the littlest studio KNIT SLEEVE PATTERN



Short Sleeve



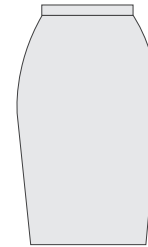
Long Fitted Sleeve



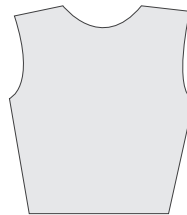
Cap Sleeve

This Pattern is an add on for the  
BASIC BODICE PATTERN WHICH IS AVAILABLE ON  
[www.thelittleststudio.com/patterns](http://www.thelittleststudio.com/patterns)

## the littlest studio KNIT PENCIL SKIRT



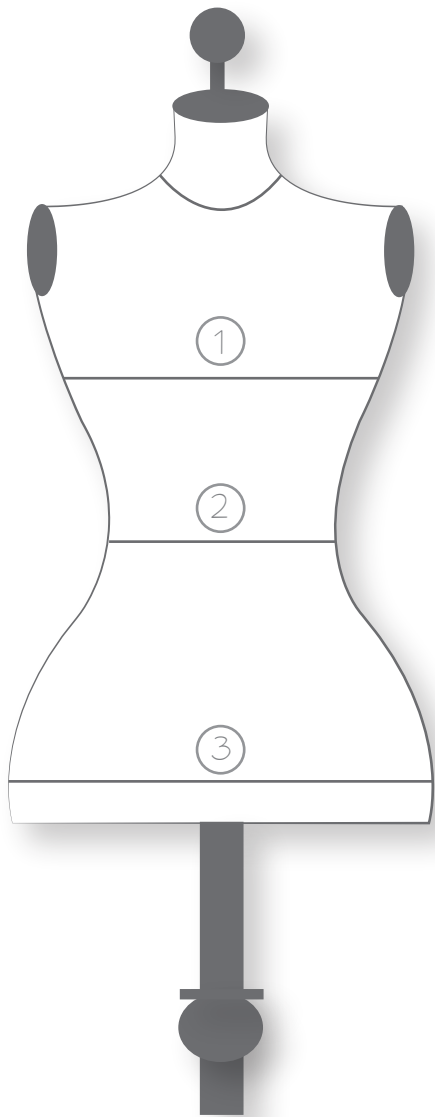
## the littlest studio KNIT BODICE PATTERN





The Littlest Studio ©2015  
[www.thelittleststudio.com](http://www.thelittleststudio.com)

The contents of this pattern  
(including instructions, photos and illustrations)  
are protected by copyright  
and belong exclusively to The Littlest Studio.  
This pattern is for domestic use only.  
No part of this pattern  
may be reproduced or resold without express permission.



## Measure

### 1. Bust

Measure around the fullest part of your bust.

### 2. Waist

Measure around the narrowest part of your waist

3. Measure around the fullest part of your hips.

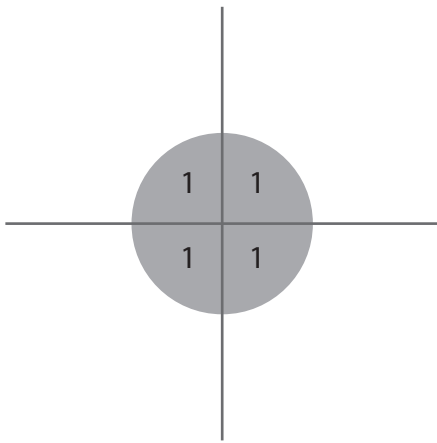
## Size Chart

Size	Bust	Waist	Hip
6	33	25	35
8	35	27	37
10	37	29	39
12	39	31	41
14	41	33	43
16	43	35	45
18	45	37	47
20	47	39	49
22	49	41	51



## Printing

When printing your pattern, make sure that your printer is set to print the “actual size” rather than have it “fit to page”. This will ensure correct sizing. Print off the first page of the pattern and measure the 2”x2” square to double check your printing.



## Assembling

After printing all your pattern pieces, match up the numbered circles to assemble your pattern. You will have to trim the paper to the border on some sides to properly tape your pieces into place.

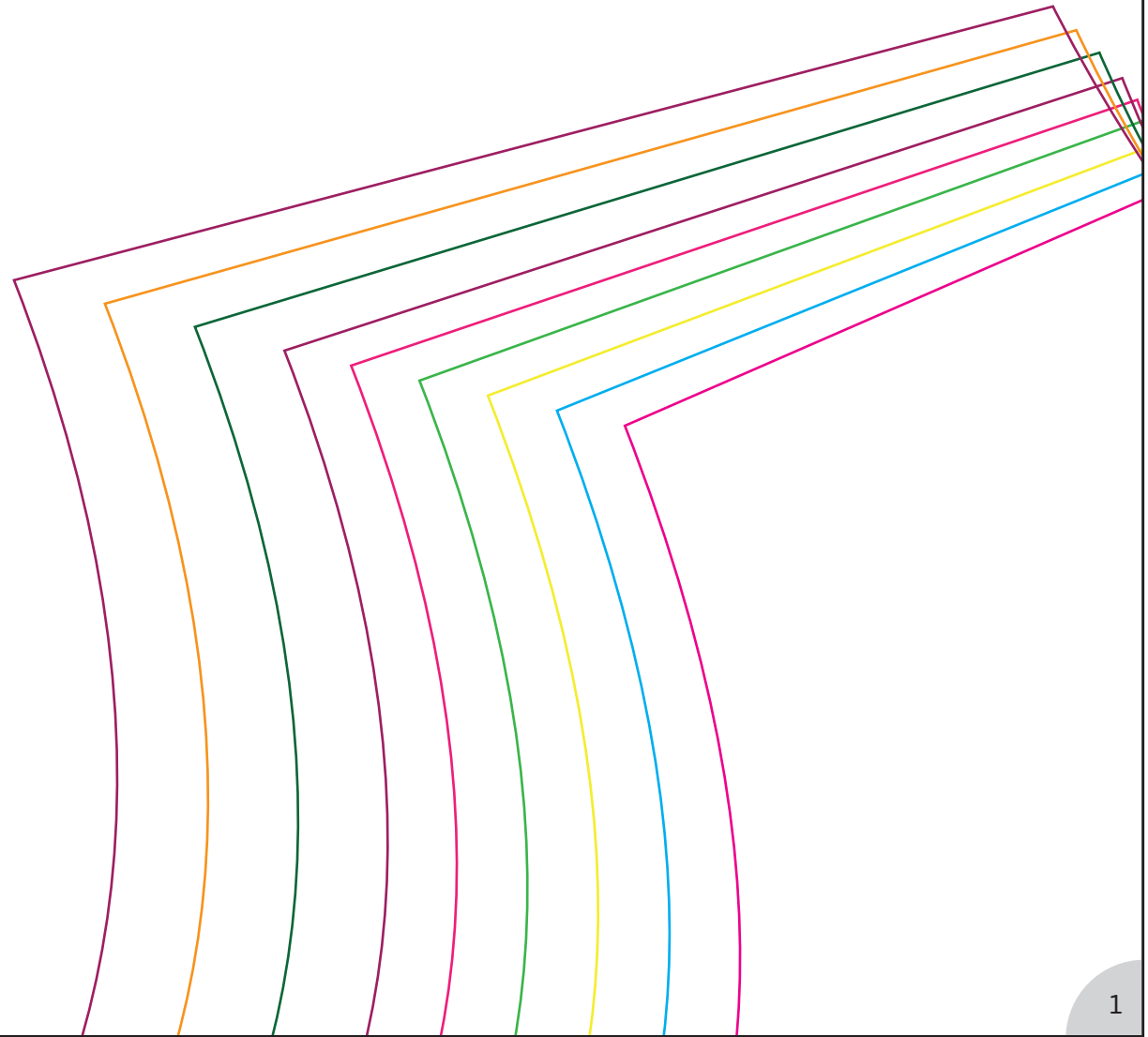
## Instructions:

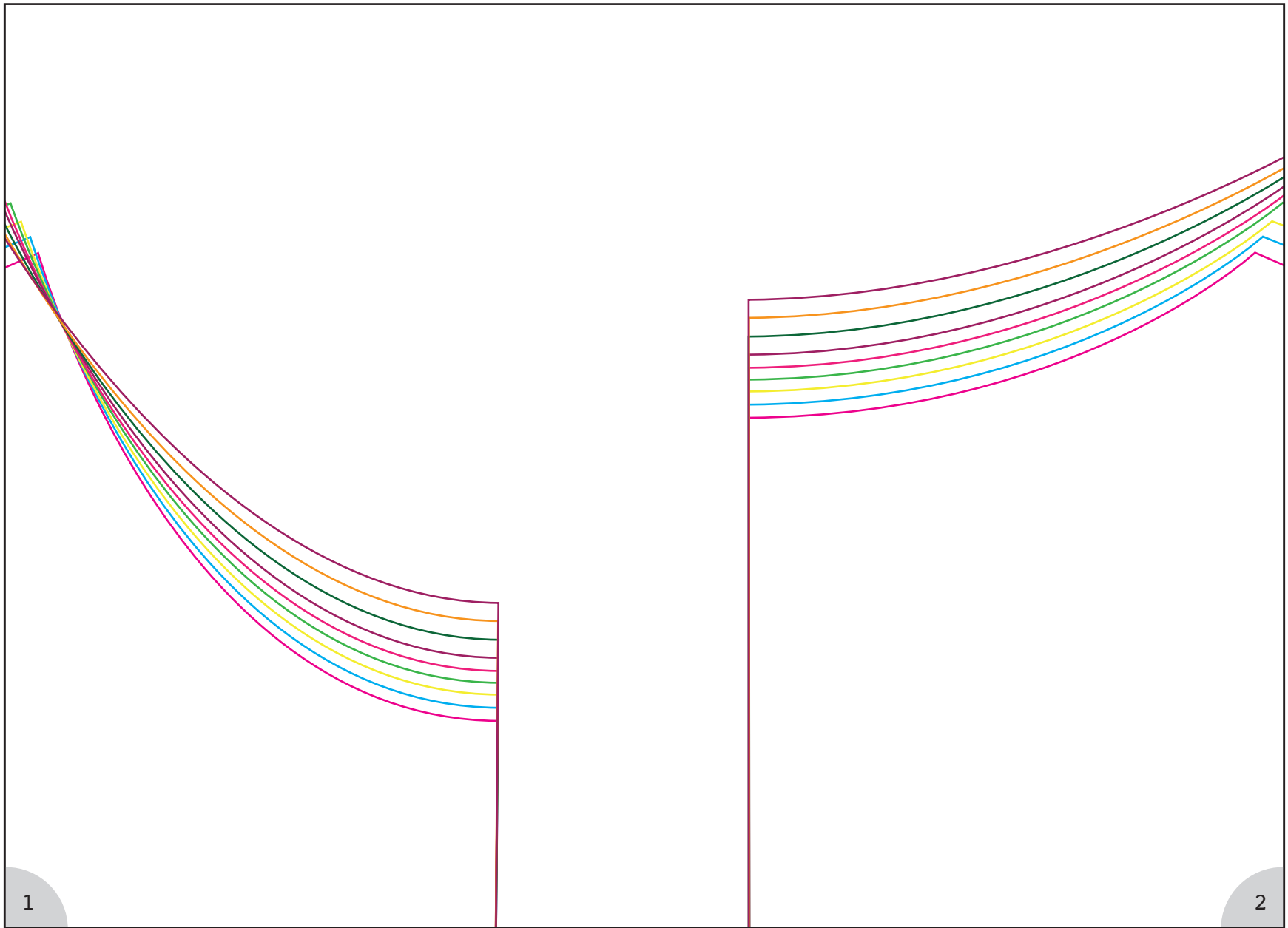
Thank you for downloading  
this free pattern.

For full sewing instructions, fabric recommendations  
and amounts please visit  
[www.thelittleststudio.com](http://www.thelittleststudio.com)

I would love to hear your feedback to improve this pattern  
please contact me at [thelittleststudio@gmail.com](mailto:thelittleststudio@gmail.com)

2" x 2"  
Square  
Print and  
Measure  
this Square  
to  
Ensure Proper  
Sizing

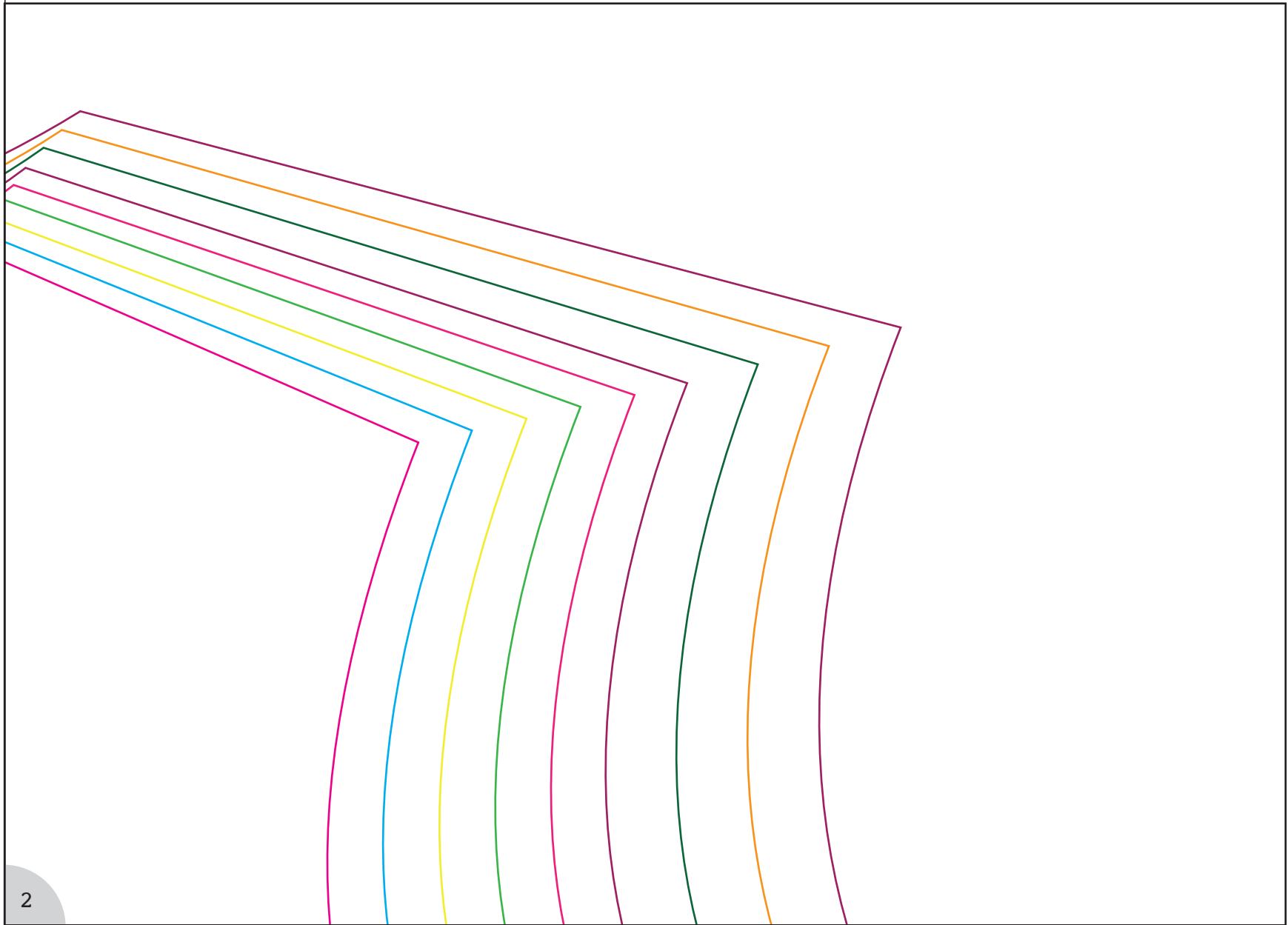


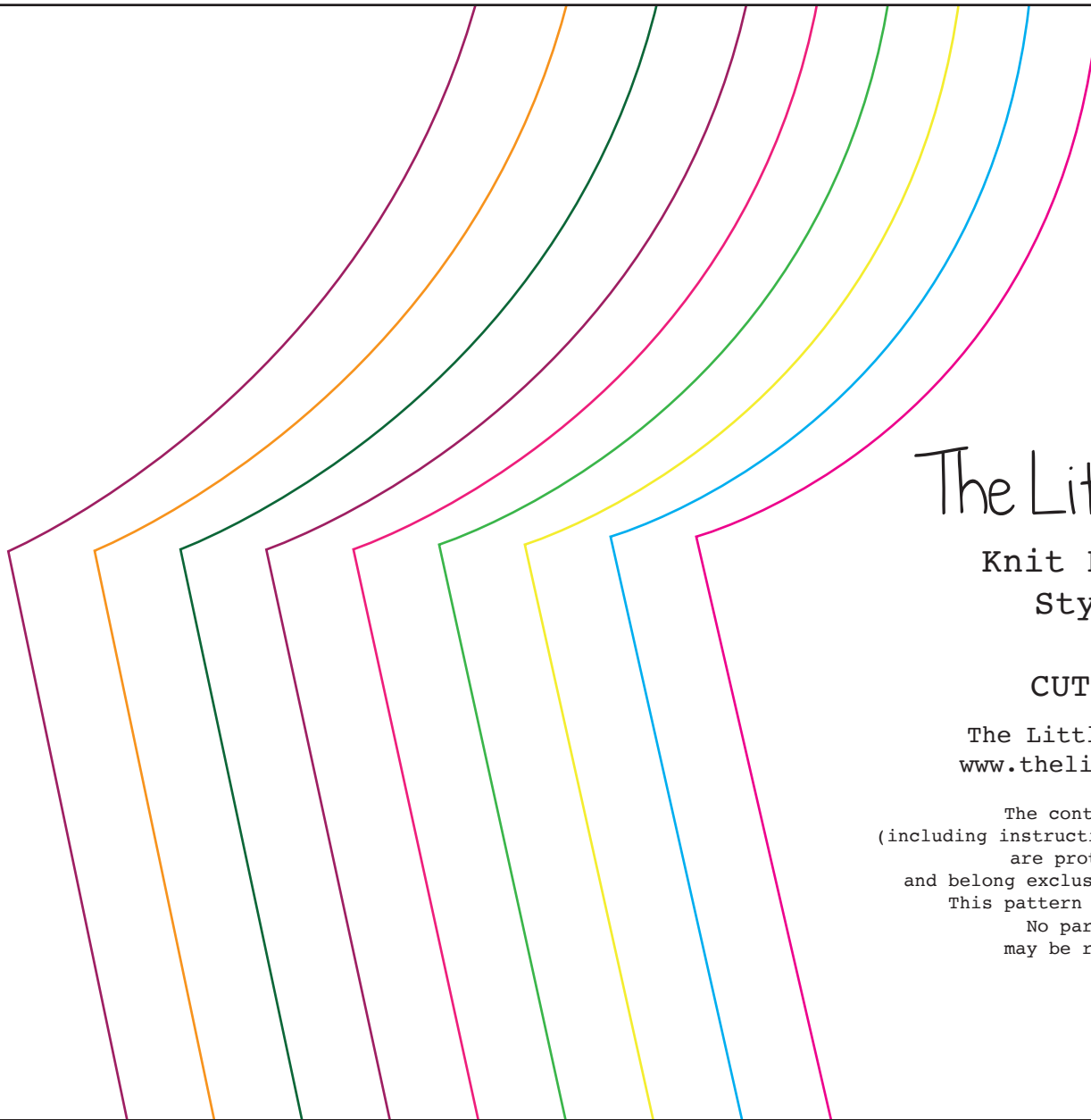


1

2







# The Littlest Studio

Knit Bodice Block

Style # 3101

Front

CUT 1 on Fold

The Littlest Studio © 2015  
[www.thelittleststudio.com](http://www.thelittleststudio.com)

The contents of this pattern  
(including instructions, photos and illustrations)  
are protected by copyright  
and belong exclusively to The Littlest Studio.  
This pattern is for domestic use only.  
No part of this pattern  
may be reproduced or resold.

1

2

GRAINLINE

Place on Fold



# The Littlest Studio

Knit Bodice Block

Style # 3101

Back

CUT 2

The Littlest Studio © 2015  
www.thelittleststudio.com

The contents of this pattern  
(including instructions, photos and illustrations)  
are protected by copyright  
and belong exclusively to The Littlest Studio.  
This pattern is for domestic use only.  
No part of this pattern  
may be reproduced or resold.

3

4

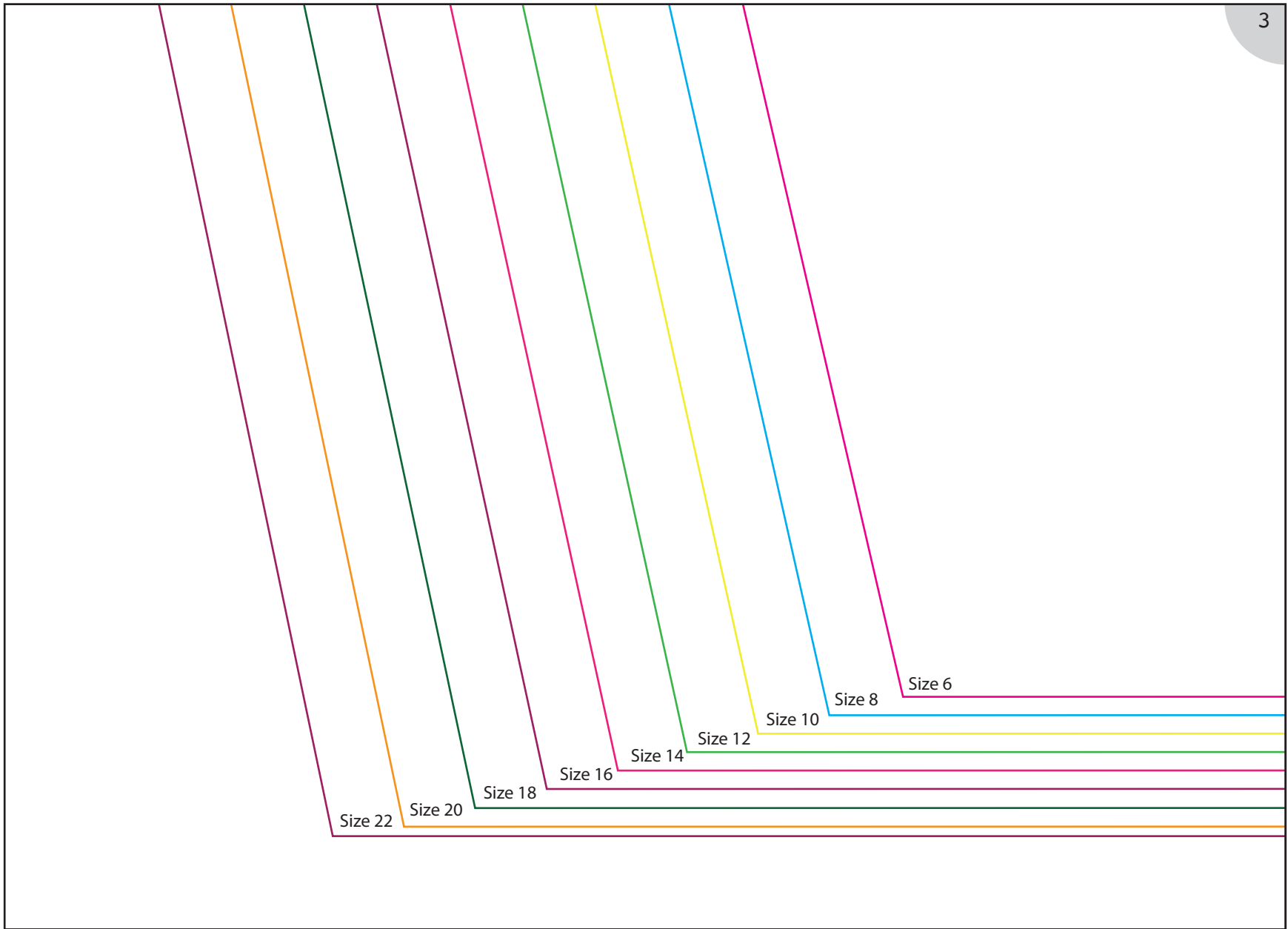
2

GRAINLINE



4





3



4



4

